

Governor News

A Publication of the Pierre Educational Foundation

December 2018

Foundation Funds 200th Mini-Grant Project

The Pierre Educational Foundation awarded two grants for classroom innovation in October. Terri Johnson, T.F. Riggs High School, was awarded \$700 to purchase a photo button maker kit for the Governor Store. The Governor Store is run by students to learn business and customer service skills. The Governor Store is able to raise funds to sustain itself by selling spirit wear and other items of interest to students. The Governor Store is open at the high school and during various school events. The grant for a button maker will allow the students to expand their merchandise line and promote school spirit for all grade levels.

Jackie Richey, Jefferson Elementary School, was awarded \$195 to create a sensory path on the school playground. The sensory path provides another option for activity for students during recess but also allows teachers to incorporate the sensory path in their classroom lessons. This unique project will incorporate physical activity with learning for all the students at the school.

These grants bring the total number of projects the Foundation has funded to 200! That is 200 innovative classroom ideas brought to life through our generous donors and excellent educators!

Allerdings Joins Foundation Board



Thomas Allerdings is the newest member of the Foundation's Board. Allerdings, General Manager of the Clubhouse Hotel & Suites, is serving as the Chamber of Commerce Representative on the Foundation.

Allerdings moved his family to Pierre 6 years ago to be a part of the opening management team



Pierre teachers use the Breakout Box funded by the Foundation as part of a Classroom Management Training. The Breakout Box is used for teachers and students to promote critical thinking skills.

for the Clubhouse Hotel & Suites. He saw a tremendous growth opportunity personally and professionally. Allerdings move was a positive one for his work and his family. "I am proud of the work our company does in Pierre, how our hotels have a positive impact on Tourism and our guests. I have a vested interest sitting on the Pierre Education Foundation Board raising children in our great community," said Allerdings. Allerdings enjoys spending time with his family, creating new designs with TEA Sandblasting & Design, softball, golf and personal/professional growth development in leadership through reading and podcasts.

STAY INFORMED

Share your email address with us to stay informed about Pierre Educational Foundation activities, plus alumni and reunion news. Send an email to jennifer@pefgovs.org to get added to our list. Thank you!



Pierre Educational Foundation

Pierre Educational Foundation

PO Box 94
Pierre, SD 57501
(605) 224-9016
jennifer@pefgovs.org
www.pefgovs.org

Board Members

Lindsey Riter-Rapp - President

At Large Trustee

Janelle Toman - Vice President

Capital University Center Designee

Nick Marso - Treasurer

At Large Trustee

Betty Hanson - Secretary

Pierre Board of Education Designee

Dennis James - Director

Pierre Board of Education Designee

Paul Turman - Director

Pierre Board of Education Designee

Deann Booth - Director

At Large Trustee

Gina Schuetzle - Director

At Large Trustee

Thomas Allerdings - Director

Chamber of Commerce Representative

The Foundation was established in 1995 with a gift from the Cora London Estate. Cora London was a successful clothier business owner and operator for many years in Pierre. Her generosity will encourage additional grants, gifts and endowments for educational purposes.

The Pierre Educational Foundation is a 501(c)(3) non-profit, community based organization committed to academic excellence in the Pierre Public School District.

The activities of the foundation are directed by a Board of Trustees representing business, education and the community.

The funds of the Pierre Educational foundation are currently being managed and held by the community-based Oahe Foundation.

From the President

Lindsey Riter-Rapp



Calling all alumni, we need your help!

As we start to close out the first half of our school year, it has once

again become readily apparent to me how much hard work and dedication is involved in educating our children.

We are fortunate to have a community of schools, teachers and staff that are committed to making sure our children reach their highest potential. Every day, I am amazed at how our teachers go above and beyond to ensure that our children have the best education.

This struck me a few weeks ago when I introduced myself to a new family in town. The mother immediately commented what a welcoming community Pierre was and how impressed she was with the teachers and schools in our community. I think sometimes it is easy to take for granted the education that our children are receiving and the teachers that make it happen.

The PEF mini-grants are just one way that we can help support our teachers and staff in providing opportunities to expand the horizons of the students in their classroom. It is always exciting to see all the innovative tools teachers are using to reach their students. It is with these tools that teachers are able to find new and exciting ways to reimagine the delivery of education in our schools.

But, we need the support of alumni like you to continue to provide these opportunities to our teachers. Some of the very teachers that may have educated you are still in our schools providing a top-notch education. In fact,

just the other day I was at the high school buying tickets for the Governor's football game and I saw a stream of students making their way into English class. Right there on the door it said "Elizabeth Vogt." Instantly, I was flooded with memories of my junior English class. Mrs. Vogt was just another one of the teachers I had at T.F. Riggs that instilled in me a love of learning.

We are so fortunate to have teachers like this in our schools but we need the support of alumni like you, who had an Elizabeth Vogt or another teacher that made a difference in their life, to continue to provide these opportunities for teachers in our community to take their lessons out of the classroom and to expose their student to learning in a whole new way.

This year more than ever we want to reconnect with our alumni, some of you who may still be in our community and some of you who are worlds away. I'm sure you can all look back and remember with fondness a teacher you had who instilled in you the passion you now hold for your job, your family or your own community. We hope you will consider giving back to the teachers and schools that were once a part of your life and now might be a part of your children or grandchildren's life too.

If you have any alumni events planned let us know so we can get them on PEF's calendar. We would also welcome the opportunity to tell your class more about what PEF is doing in our community and the various opportunities that are available to give back to your alma mater. Whether it be donating to our E-Wall of Honor, our PEF mini-grants or establishing a scholarship, we need alumni like you to help us make it possible!

Thank You

The following is a list of donors to the Pierre Educational Foundation from January - November 2018. Every effort was made to ensure accuracy of the donor list. If your name was omitted or misspelled, please accept our apologies and contact the Foundation with corrections at 605-224-9016 or via e-mail at jennifer@pefgovs.org.

<i>Paula Adam-Burchill</i>	<i>Foundation Fund</i>	<i>Martha Nelson</i>	<i>In Memory of Pauline Donaldson ('38)</i>
<i>Jeffrey & Nadine Amy</i>	<i>Emde Family Fund</i>	<i>Abbie (Burke) O'Connor</i>	<i>In Memory of Jenny Wegner</i>
<i>Patricia Arndt</i>	<i>In Memory of Cheryl Pietrus Gloe</i>	<i>Marlowe Peters</i>	<i>In Memory of Mary Jo Pietrus Peters</i>
<i>Sandra Baer</i>	<i>In Honor of Class of 1957</i>	<i>Wade & Karen Pogany</i>	<i>Foundation Fund</i>
<i>Mara Blakis-Eglajs</i>	<i>In Honor of Class of 1960</i>	<i>Sandra Poindexter</i>	<i>In Honor of Class of 1957</i>
<i>Matthew Brakke</i>	<i>Brakke Family Fund</i>	<i>Penny & John Porter</i>	<i>In Memory of Class of 1967 Classmates</i>
<i>Verne Brakke</i>	<i>Brakke Family Fund</i>	<i>Mary L. Pritchett</i>	<i>In Honor of Class of 1957</i>
<i>Mary Richard Carter</i>	<i>In Memory of Lois Thompson</i>	<i>C. A. Rayback</i>	<i>In Memory of Ruth Smith</i>
<i>Sheila & JR Clark</i>	<i>In Memory of Marrietta Catlin</i>	<i>Robert C. Ritter, Jr.</i>	<i>In Memory of Lois Thompson</i>
<i>James & Louise Coull</i>	<i>Foundation Fund</i>	<i>Lindsey Ritter-Rapp</i>	<i>Foundation Fund</i>
<i>Jeanette Enright</i>	<i>In Honor of Class of 1957 (Neil Lueke)</i>	<i>Rosemary Rounds</i>	<i>Foundation Fund</i>
<i>Thomas & Brenda Evans</i>	<i>In Honor of Joe Thorne ('58) and In Memory of Dick Bad Moccasin ('58)</i>	<i>Donald & Judith Schliessman</i>	<i>Schliessman Family Scholarship</i>
<i>Jane & David Fairbanks</i>	<i>In Memory of Henry Potter</i>	<i>Michael & Shirley Schliessmann</i>	<i>Schliessman Family Scholarship</i>
<i>Jerry Linda Fischer</i>	<i>In Memory of Lois Thompson</i>	<i>John Schliessmann</i>	<i>Schliessman Family Scholarship</i>
<i>Dennis & Patrica Germann</i>	<i>In Honor of Class of 1964</i>	<i>Ann & Jay Schwartz</i>	<i>In Honor of Class of 2018, Lisa Larson and Paula Weeldryer</i>
<i>Jo Rawlins Gilbert</i>	<i>In Memory of RE Rawlins</i>	<i>Lyssa Shadrick</i>	<i>In Honor of Class of 1965</i>
<i>Mary (Murphy) Gillette</i>	<i>In Memory of John T Murphy ('50)</i>	<i>Heather & Kermit Shoup</i>	<i>Foundation Fund</i>
<i>Anne & Grant Gormley</i>	<i>In Memory of Marrietta Catlin</i>	<i>Loretta Siwik</i>	<i>In Honor of Class of 1957 (Neil Lueke)</i>
<i>Maynard & Mary Greenfield</i>	<i>In Memory of John and Anne Woods</i>	<i>Oscar & Fiona Sohns</i>	<i>Emde Family Fund</i>
<i>Jay S. Gregory</i>	<i>In Honor of Class of 1968</i>	<i>Jennifer & Bob Stalley</i>	<i>In Memory of Justice Steven Zinter</i>
<i>Franklin P. & Shirley Halligan</i>	<i>In Memory of Lois Thompson</i>	<i>Tim Stocking</i>	<i>Foundation Fund</i>
<i>Tyler & Lena Hammell</i>	<i>Evening of Excellence Program</i>	<i>Alice Stulken</i>	<i>Foundation Fund</i>
<i>Betty & Will Hanson</i>	<i>In Memory of Beverly Clausen</i>	<i>Edward Tegland</i>	<i>Emde Family Fund</i>
<i>Betty & Will Hanson</i>	<i>In Memory of Vern Krueger</i>	<i>Fred & Joan Tweet</i>	<i>In Honor of Class of 1957</i>
<i>Karen Hasek</i>	<i>Evening of Excellence Program</i>	<i>Jay & Elizabeth Vogt</i>	<i>In Honor of Elizabeth Vogt</i>
<i>Jerry & Sheryl Hawkins</i>	<i>In Memory of Patrica Adam, Nancy Jahraus and Patricia Stoesser</i>	<i>Fred & Julie Waxler</i>	<i>In Memory of Marrietta Catlin</i>
<i>Monte & Barbara Hillestad</i>	<i>In Memory of Marrietta Catlin and Lois Thompson</i>	<i>Karl Wegner</i>	<i>In Memory of Merlin Tipton ('48)</i>
<i>Tanya & William Hoppes</i>	<i>Emde Family Fund</i>	<i>Tony & Sharon Wegner</i>	<i>In Honor of Class of 1955</i>
<i>Naomi (Gates) Hughes</i>	<i>In Honor of Class of 1957</i>	<i>John & Jill Wellhouse</i>	<i>In Memory of Mel Chandler</i>
<i>Heather Hyde</i>	<i>In Honor of Class of 1957</i>	<i>John & Jill Wellhouse</i>	<i>In Memory of Marrietta Catlin and Lois Thompson</i>
<i>Randall & Dianne Ice</i>	<i>Foundation Fund</i>	<i>Siv Wheeler</i>	<i>Emde Family Fund</i>
<i>Sue & Jack Kuhl</i>	<i>Emde Family Fund</i>	<i>Joyce & Dennis Williams</i>	<i>In Memory of Hyrma Zakahi</i>
<i>Nanette & Jack Kuhl</i>	<i>In Memory of Lois Thompson</i>	<i>Wayne Wise</i>	<i>In Honor of Class of 1958</i>
<i>Emma Ledbetter, MD</i>	<i>In Memory of Lois Thompson</i>	<i>Susan Woodmansey</i>	<i>In Memory of Muriel and George Ryan</i>
<i>Ernest Lehr</i>	<i>In Memory of Peter Wegner ('46)</i>	<i>BankWest</i>	<i>Evening of Excellence Program</i>
<i>Karen & Buron Lindbloom</i>	<i>In Memory of Marrietta Catlin</i>	<i>Brosz Engineering, Inc.</i>	<i>Evening of Excellence Program</i>
<i>Fred Marso</i>	<i>In Honor of Class of 1957 (Neil Lueke)</i>	<i>Slumberland</i>	<i>Evening of Excellence Program</i>
<i>Mary L. & Richard Mattern</i>	<i>In Honor of Class of 1967</i>	<i>Capital University Center Foundation, Inc</i>	<i>Evening of Excellence Program</i>
<i>Nina & Lee Maxfield</i>	<i>In Honor of Class of 1963</i>	<i>Stulken, Petersen, Lingle, Walti, & Jones, LLP</i>	<i>Evening of Excellence Program</i>
<i>Jay & Beverly Mickelson</i>	<i>In Memory of Marrietta Catlin</i>		
<i>Jerry R. Morrissey</i>	<i>In Honor of Class of 1953</i>		
<i>Curt Mortenson</i>	<i>Mortenson Family Scholarship</i>		



Class of 1969 – 50th Class Reunion

September 6 & 7, 2019

Contact: Peggy Huber

Huber_peggy@hotmail.com

Class of 2009 – 10th Class Reunion

June 21-22, 2019 in Pierre

Information on the Facebook page Pierre

Class of 2009 (www.facebook.com/groups/298181974084434/)

Class of 1979 – 40th Class Reunion

June 21-22, 2019 in Pierre

For more information, contact Lisa Brinkman Blake.

1979 Championship Basketball Team Reunion – 40th Season Reunion

Saturday, January 26, 2019

(During Pierre High School Basketball Game)

For more information, call Bob Stalley at 605-280-9561.

The Foundation can provide your class with contact information for reunion planning. Please let the Foundation know about your reunion plans so we can help share the information.

Alumni News

The Pierre Educational Foundation would like to hear about marriages, births, and remembrances of alumni who have passed away. We will also be printing information about upcoming class reunions, so please keep us informed so we can help keep your classmates informed.

Please send your news to our offices at PO Box 94 Pierre, SD 57501, or via e-mail to jennifer@pefgovs.org.

Year End Charitable Giving Tips

People have any number of reasons for charitable giving. You may choose to support your personal values and areas of interests with gifts. Or, you may donate with an eye towards your estate and tax planning goals. Whatever your reason for wanting to make a donation, you may consider making a gift to the Pierre Educational Foundation to help further its mission of supporting excellence in education.

Here are some quick charitable giving ideas to help with your year-end planned giving:

1. Consult with your tax advisor.

With the recently passed tax reform, income tax benefits of charitable giving may be more difficult to realize each year. Specifically, the doubling of the standard deduction may present a challenge for some individuals and joint filers to itemize their deductions and receive the income tax deduction of a charitable gift.

2. Donate appreciated assets.

With the stock market near record highs, it may make sense to gift highly appreciated individual stocks or mutual funds. You can even donate highly appreciated real estate. A direct gift to a charity can help you avoid capital gains tax and fulfill some of your gifting goals.

3. Donate personal property.

I know a lot of people don't enjoy writing checks, so why not donate personal property to your favorite charity!? Whether it's an antique, collectible or jewelry that isn't bringing you any joy, make a difference with a gift to your favorite charity.

4. Make a charitable rollover.

If you are 70 ½ or older and have an IRA account, you can make a charitable rollover to your favorite charity. You don't necessarily get a tax deduction for this, but it does help you avoid paying income tax on the distribution. Make sure you consult your financial and tax advisors to make sure you are eligible for this option and to make sure that the transaction is done properly.

5. Have a plan.

Set specific goals and objectives for your charitable giving. Remember to track your progress to make changes as needed. Make sure that any charitable giving is done with a purpose and doesn't pose any potential adverse consequences to your overall financial stability and health. A completed gift cannot be returned, even if a financial hardship occurs.

6. Gift of Life Insurance

You can transfer ownership of an old life insurance policy to a charity or purchase a new life insurance policy with the charity as the owner and beneficiary. Your premium dollars can guarantee a specific larger gift in the future.

7. Keep it simple.

We live in a fast-paced and complex world. Don't let the numerous options out there keep you from fulfilling your charitable giving goals. If you know of a charitable organization that needs your help, make sure to give what you can, when you can.

These tips are provided courtesy of Matthew Brakke. CHFC, CLU. (605) 224-5509; mbrakke@ft.newyorklife.com; 1205 N. Harrison Ave., Suite 201, Pierre, SD 57501-2395. You should always consult with your tax and financial advisors prior to implementing any charitable giving strategy.

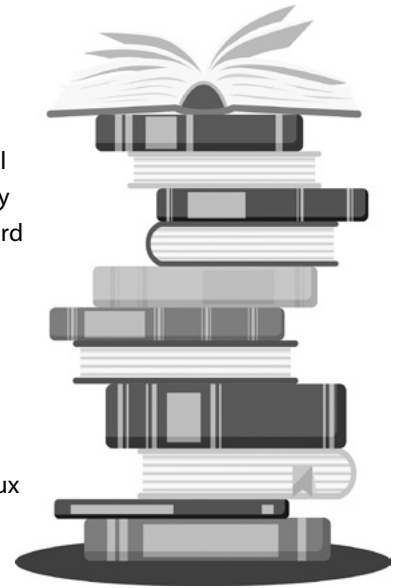
Book Study Funded by Foundation

The Foundation recently provided funding for a teacher Book Study led by Jennifer Nedrebo and Jackie Richey. The Book Study is a professional development opportunity offered to teachers in the Pierre School District. Funding from the Foundation purchased the Book Study book, *Lost at School* by Ross Greene, for each of the teachers participating the professional development opportunity.

"The Foundation has long supported classroom projects to help teachers connect lessons and ideas for students in the classroom. Funding a project specific to a teacher's professional

development is new for the Foundation," according to Jennifer Stalley, Foundation. "We are excited to be supporting professional development for teachers in such a direct way with this project. The Foundation looks forward to being able to support additional activities, like this Book Study, to directly support our teachers."

The Book Study will be held over a course of weeks this winter with the option for college credit available through the University of Sioux Falls for those who participate.



Our Mission

The Pierre Educational Foundation promotes the further educational development of the Pierre Public School District students, staff and graduates through the delivery of quality educational opportunities and resources.

Pierre Educational Foundation Contact/Donation Form

First Name _____ MI _____ Last Name _____

Maiden Name (if applicable) _____ Riggs Grad Year _____

Address _____

City _____ State _____ Zip _____

Email _____ Phone (_____) _____

Spouse's Name _____ Riggs Grad Year _____

News or Comments: _____

Enclosed is my gift of \$ _____

This gift is in: memory of honor of _____

Designated toward: General Donation New Teacher Welcome Program

Scholarship/Enrichment Fund (please specify): _____

Evening of Excellence Event

Please make checks payable to Pierre Educational Foundation. Thank you!
Mail to: Pierre Educational Foundation, PO Box 94, Pierre, SD 57501

Evening OF *Excellence*

MAY 2, 2019



Pierre Educational Foundation

PO Box 94

Pierre, SD 57501

NON-PROFIT
U.S. POSTAGE
PAID
PIERRE, SD 57501
PERMIT NO. 123

Governor News

A Publication of the Pierre Educational Foundation

December 2018



In This Issue:

- Foundation Funds 200th Mini-Grant Project
- Allerdings Joins Foundation Board
- Message from Foundation President Lindsey Riter-Rapp
- Thank You to Foundation Donors
- Year End Charitable Giving Tips
- Book Study Funded by Foundation